

MOUNT DIABLO REVIEW



MOUNT DIABLO INTERPRETIVE ASSOCIATION

Established in 1974

Spring / Summer 2011

MDIA, PO Box 346, Walnut Creek, CA 94597-0346 • 925.927.7222 • fax 877.349.5016 • www.mdia.org

PARK SUPERINTENDENT'S REPORT

by Roland Gaebert



Roland Gaebert,
Bay Sector
Superintendent

Welcome, park visitors! This issue has many great articles loaded with lots of information that should make your visit to Mount Diablo State Park that much more fun. In this issue, you will read about the refurbishment of the interpretive Summit Visitor Center. The work and planning was done with the help of so many wonderful Mount Diablo Interpretive Association (MDIA) members and

park staff. If you haven't seen it yet, you are in for a treat. We regret, however, that the observation deck is temporarily closed because it is experiencing water leakage and is in need of some serious repair.

The State's budget problems have had a very hurtful impact on your State Parks. The State Parks' deferred maintenance list is long and represents an estimated \$1.3 billion in broken and breaking infrastructure. This crisis affects how State Parks functions. In some cases, it has led to service reductions and other actions to save even more money.

The staff, park volunteers, and members of MDIA continue exhaustive efforts to keep the park functioning. Given the budget crisis, we need your help now more than ever. Your donations and your volunteerism are seriously needed. If you have retired or are close to retirement and you want to

continued on page 6

MDIA PRESIDENT'S COLUMN

by Jim Mitchell

Welcome to Mount Diablo State Park. The members of the Mount Diablo Interpretive Association (MDIA) and the many volunteers who work closely with the park staff to enhance your visit to the mountain are happy to share this very special place with you.



Jim Mitchell, MDIA President

Spring in the park starts with cool wet weather that brings spectacular blooms of wildflowers to the hillsides. Poppies, lupine, and the indigenous yellow Mount Diablo fairy lanterns are common along the roads and trails as the weather warms from the winter cold. As summer begins, hot weather hits the mountain and the grasses dry, leaving shade only deep in the canyons where wildlife gathers around the few springs and remaining green grass.

All year, the park has a great diversity of interesting features and activities to offer. MDIA provides information about the park online at www.mdia.org. A virtual tour of the park contains descriptions and photos of points of interest, campgrounds, picnic areas, and hikes. Maps and guides to the park are also available at visitor centers located at the summit and Mitchell Canyon. In addition, you can often

continued on page 2

If you wish to submit articles or photographs for the
Mount Diablo Review,

leave a message for Ruth Ann Kishi at 925-927-7222
or email at mdiamail@aol.com.

Submission deadline for the Spring/Summer issue is February 1,
and for the Fall/Winter issue is August 1.

Save Mount Diablo generously publishes the
"Events Schedule", which includes hikes in
Mount Diablo State Park.

This schedule may be found online at
www.savemountdiablo.org
or via a link at www.mdia.org.

MDIA PRESIDENT'S COLUMN

continued from page 1

find park aides and docents who are very knowledgeable and can lead you to whatever type of activity that interests you.

Entering the park on either the North Gate or South Gate Roads will lead you to the summit and, on a clear day, one of the best views in California. Mountain peaks in the Sierra Nevada, Mount Lassen, the Central Valley, and San Francisco Bay and Delta are frequently visible.

At the summit, you will be welcomed into the park's newly remodeled visitor center. (See article on this page.) On your way through the park to the summit, you will pass many picnic areas, overlooks, trailheads, and campgrounds. One of the most popular stops for families is Rock City with several picnic areas and unique wind-carved sandstone rock formations and caves just waiting to be explored. Other picnic areas along the route offer vistas of the Diablo and Livermore Valleys or secluded individual picnic tables shaded by oaks. Please take time to pull off the road to explore these areas, but be very careful of other vehicles and bicyclists and use only designated turnouts to stop.

MDIA exists to enhance your visit to the park through the development of interpretive displays, publications, and support of park programs. Any purchases you make in the park's visitor centers or donations you make to MDIA help support these activities. Late last year, after completing her second summer of the Junior Rangers Program, Gwyneth Fagg asked her friends to make donations to help the park instead of receiving gifts for her eighth birthday. She told her friends that the park needed donations more than she needed gifts. We are blessed to receive this type of generous donation and are reminded how important it is to preserve Mount Diablo State Park for future generations.

Please enjoy your visit to Mount Diablo and let the mountain inspire and energize you.

**Summit Museum is open
7 days a week
10:00am to 4:00pm**

**Summit temperature and wind
conditions are updated every
20 minutes at 925-838-9225**



VISIT NEWLY RENOVATED MOUNT DIABLO SUMMIT VISITOR CENTER

by Steve Elliott

Completely renovated in the fall of 2010, the Mount Diablo Summit Visitor Center offers new exhibits, better access to visitor information, and facility upgrades. "We are excited to offer this renovation to our visitors," said Roland Gaebert, Park Superintendent. "We have added new hands-on exhibits about the history, geology, and flora and fauna of Mount Diablo."

The inside was renovated to the craftsman style matching the era of when the visitor center was built. A unique addition is the use of artwork that dates from the 1940s. A computer accessing many Mount Diablo information sources and a fireplace/reading nook were also added. The summit rotunda features stunning landscapes by noted photographer Stephen Joseph.

"We are pleased to partner with State Parks to assist with this renovation," said Jim Mitchell, President of Mount Diablo Interpretive Association. "The Summit Visitor Center hosts many thousands of visitors from all over the world. The Bay Area takes great pride in this historic facility."

The building that houses the Summit Visitor Center was built by the Civilian Conservation Corps in the 1940s and is recognized as a National Historic Landmark. It is built from fossil-laden sandstone quarried in the park. The Summit Visitor Center is located at the top of Mount Diablo in Mount Diablo State Park. California State Parks supports equal access. Prior to arrival, visitors with disabilities who need assistance may call the sector office at 925-673-2891.



Photo by Clayton Worsdell

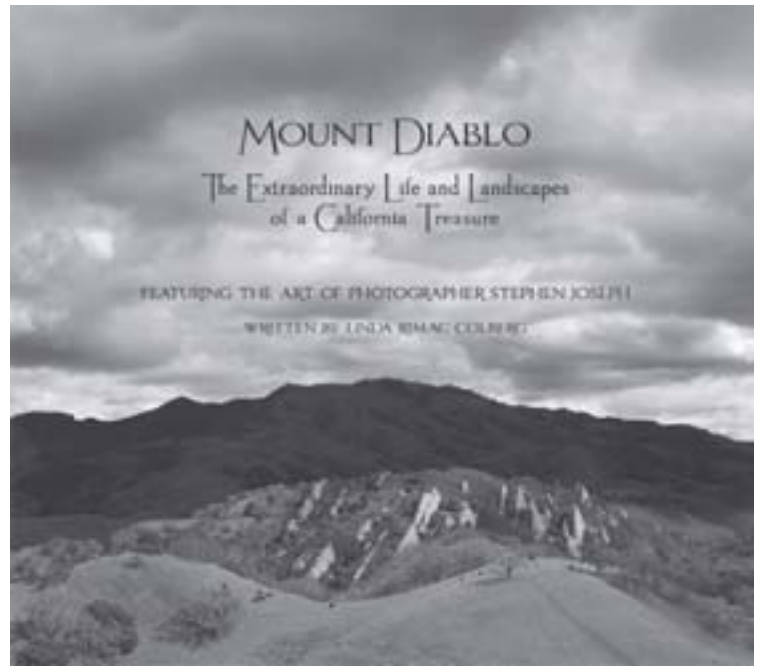
MOUNT DIABLO INTERPRETIVE ASSOCIATION DÉBUTS FINE ART PHOTOGRAPHY BOOK

Just in time for the change of seasons, when people are anxious to get outdoors and back on the hiking trails, Mount Diablo Interpretive Association has released *Mount Diablo, The Extraordinary Life and Landscapes of a California Treasure*, its highly anticipated, first ever fine art photography book showcasing Mount Diablo, one of Northern California's most significant historical, cultural, and geological treasures.

Renowned for its comprehensive Mount Diablo interpretive guide books and detailed maps, MDIA has taken a bold step in producing this distinctive 13" x 13" pictorial that celebrates the incomparable natural beauty and diversity of Mount Diablo in 181 exquisite color and black-and-white images and panoramas created by local landscape photographer Stephen Joseph.

Dominating the landscape at 3,849 feet, Mount Diablo lives in the heart of exploding populations and encroaching development. Yet, the mountain is home to a rich diversity of life and landscapes, and is popular among people looking for solitude, history, or adventure. In this expansive photographic collection, Joseph has built a gallery of lush imagery from the perspective of both an artist and a naturalist, drawing on 25 years of trekking and photographing the mountain.

Joseph's work as a regional photographer, including his work as Muir Woods National Monument Centennial Photographer, is widely published and exhibited; his signature panoramas are highly regarded. Now, from thousands of photographs of Mount Diablo, Joseph has chosen 181 images and stunning panoramic creations to escort readers on a journey through this remarkable land. He has painstakingly reworked and remastered every photograph, from the earliest portraits taken with his Kodak panoramic camera built in the 1800s to his most recent panoramas



created with digital camera and software technologies. In doing so, he is able to present a compelling body of images of quite unexpected beauty and quality, and the first ever artistic compilation that captures Mount Diablo in such grand style and with such single-minded focus.

Supporting text by San Francisco Bay Area writer Linda Rimac Colberg offers descriptive and intriguing background on Mount Diablo, with glimpses into its storied history as a geological wonder and cultural icon. With imagery and imagination, Colberg profiles the mountain, the photographer, and the mountain life of one family, the Greens of Berkeley, who had a home, designed by famed Bay Area architect William Wurster, on Mount Diablo from 1938 to 1965.

Mount Diablo, The Extraordinary Life and Landscapes of a California Treasure, published by Mount Diablo Interpretive Association, 2010; 266 pp; \$40. Available March 2011 through mdia.org and at Mount Diablo Summit and Mitchell Canyon visitor centers and Barnes & Noble, Walnut Creek.

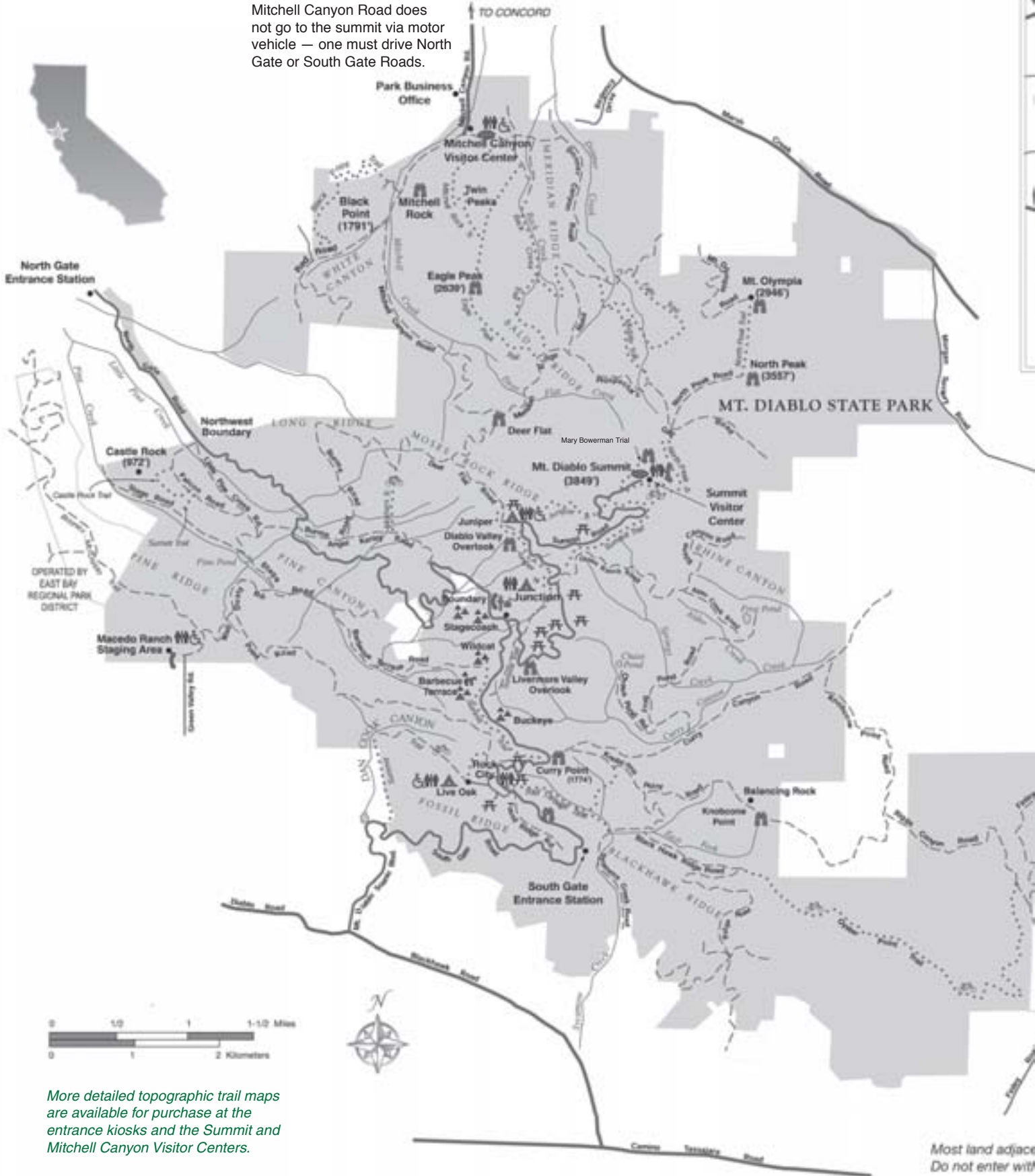
From *Mount Diablo, The Extraordinary Life and Landscapes of a California Treasure*:

A sculpted work of living, breathing art, adorned in brilliant colors and muted tones, Mount Diablo teems with life in all stages of birth, being, and beginning again. ... Wildflower meadows, oak savannahs, and wooded slopes rotate their showy displays of royal larkspur, blue hound's tongue, yellow cow parsnip, magenta chaparral pea, lavender Ithuriel's spear, pink shooting star, elegant whorls of violet Chinese houses, and picture-postcard fields of the state's signature California poppy.

~Linda Rimac Colberg

MOUNT DIABLO STATE PARK

Mitchell Canyon Road does not go to the summit via motor vehicle — one must drive North Gate or South Gate Roads.



More detailed topographic trail maps are available for purchase at the entrance kiosks and the Summit and Mitchell Canyon Visitor Centers.

Most land adjacent to park boundary. Do not enter without permission.

CAMPING AT MOUNT DIABLO STATE PARK

Mount Diablo has three designated family camping areas and five group camps:

Juniper Campground (36 sites, elevation 3000 ft.) Located approximately 2 miles below the summit, on Summit Road, Juniper is known for its fantastic views. Reservations Available.

Live Oak Campground (23 sites, elevation 1450 ft.) Located one mile above the South Gate Entrance Station, off South Gate Road. Live Oak is near Rock City. At Rock City one can explore rock formations. Reservations Available.

Junction Campground (6 sites, elevation 2200 ft.) Located where South Gate and North Gate meet at the Ranger Station. This campground is situated in an open woodland area. Available on a first come/first served basis ONLY.

*All campgrounds are provided with picnic tables, fire pits or stoves, potable water and rest rooms.

*The campgrounds are mainly designed for tent camping, yet they can accommodate RVs up to 20 feet in length. There are no hook ups and no dumping stations provided in the Park.

*A pay phone is located at the Junction Ranger Station.

Camping Procedures

You may make reservations from 48 hours to 7 months in advance by calling **Reserve America at 1-800-444-7275** or by visiting their website at www.reserveamerica.com.

Reservations can be made for a specific campground but not a specific site.

Campers will not be registered at Mitchell Canyon.

***Check-in time is 2:00 PM. — Check-out time is 12:00 NOON.**

Group Camps—Buckeye, Barbecue Terrace, Wildcat, Stagecoach and Boundary.

Reservations are available for all group camps with Reserve America. Each campground is primitive with running water and pit toilets. BBQ Terrace is equipped with horse ties for equestrian use. Motorhomes are not allowed in the group camping areas. During the fire season (generally, May—October) the park is subject to closure due to extreme fire danger. Campers must call the park at **925-837-2525 or 925-837-0904** one day prior to their arrival to confirm park status.

General Rules

*Alcoholic beverages are prohibited in the park.

*8 people and 2 vehicles maximum per family campsite.

*Each juvenile (under the age of 18) must have written permission from his/her parents (with the parents' phone number) prior to camping. Phone verifications will be attempted.

*Quiet hours are from 10:00 PM to 6:00 AM.

*No electric generators from 8:00 PM to 10:00 AM.

*Firewood gathering is prohibited.

*Fires must be in stoves or fire pits provided (NO GROUND FIRES).

*Campfire restrictions are in effect during the fire season. Check fire conditions for appropriate use (see page 8).

*Campers are locked in the park overnight from sunset to 8:00 AM. For emergencies, dial 911.

*Peace and Quiet: Noise must not carry beyond your immediate camp or picnic ground.



Legend

- Paved Road
- Fire Roads (Hiking, No Vehicles)
- Hiking Trail
- Accessible Feature
- Bicycle Trail
- Campground
- Exhibits
- Group Campground
- Horse Campground
- Picnic Area
- Ranger Station
- Restrooms
- Telephone
- Viewpoint

Park Fees: (per car)

Mitchell Canyon Entrance	\$6.00
Macedo Park Entrance	\$6.00
North and South Gates	\$10.00
minus \$1 for Seniors 62+	
Annual Park Pass	\$125.00

ent to the park is private property.
out the owner's permission.

Nightly Rates	
Junction Campground	\$30.00
Juniper Campground	\$30.00
Live Oak Campground	\$30.00
Additional Vehicle (one only)	\$10.00
Senior Discount (62+)	\$2.00 off Camping Fees

Group Camps			
Name	Nightly Use Fee	Capacity	Vehicles
Stagecoach	\$65.00	20	7
Boundary	\$65.00	20	7
Buckeye	\$100.00	30	10
Wildcat	\$100.00	30	10
BBQ Terrace	\$165.00	50	17

PARK SUPERINTENDENT'S REPORT

continued from page 1

do something productive and very satisfying, think about joining California State Parks as a volunteer or as a member volunteer of MDIA. Besides the camaraderie, satisfaction of volunteerism, and knowing you are part of what makes a park successful, it is also a lot of fun. Even if you are not retired, please consider volunteer opportunities that take just a little time, but give lots of personal reward. For more information, visit www.mdia.org.

Finally, I want to tell you about the Mount Diablo Astronomical Society (MDAS) and the Mount Diablo Observatory Association (MDOA). These sister organizations conduct public astronomy programs from March to October each year. They meet in the lower summit parking lot where the sky is clear and the stargazing is amazing. Many times you will find more than 30 telescopes aimed at the heavens. For more information, go to www.mdas.net. These are both educational and fun events for the entire family. When today's kids are often found glued to the internet and computer games, it is nice to know that a night adventure is geographically close. Stargazing from on top of Mount Diablo is a way to gets the kids out and the family together. Don't forget the hot chocolate.

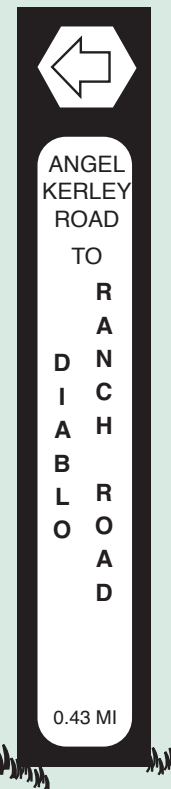
UNDERSTANDING TRAIL SIGNS

Over 400 trail signposts identify almost 187 miles of hiking trails in Mount Diablo State Park's 20,000 acres.

The trail signs in the park follow a uniform format prescribed for use in all California State Parks. The format has confused more than one visitor who has hastily read only the larger words on the sign. The name of the trail you are on is specified in relatively small horizontal type near the top of the sign.

The name that appears vertically in larger type (usually another trail but sometimes a park boundary) shows the termination of that particular trail; the word "TO", in small letters, is important. The mileage to that end point is specified at the bottom.

The simplified sample to the right shows that you are on Angel Kerley Road, and that if you go .43 miles to the left, you will arrive at the junction with Diablo Ranch Road.



2011 PUBLIC ASTRONOMY PROGRAMS ON MOUNT DIABLO

Presented by Mount Diablo State Park, Mount Diablo Astronomical Society, and Mount Diablo Observatory Association

Date	Topic
Mar 5, 5:30	<i>Where Do Stars Come From?</i> Baby stars, teenage stars, old stars, black holes! Take a tour through the telescopes and discover the lives of stars.
Apr 30, 7:00	<i>Are We Alone?</i> What will the first alien life we discover likely look like? How will we find it? Where are we looking? Are they looking at us?
May 7, 7:30	<i>Rings of Saturn:</i> Here's your chance to see Saturn and the Moon through telescopes. Make a Pocket Solar System and explore the rest of the universe through the telescopes.
Jun 4, 8:00	<i>Rocks from Space:</i> The Earth is hit all the time with small space rocks. Hold real meteorites in your hand. Why does the Moon have so many craters and Earth so few?
Jul 9, 8:00	<i>Go Inside a Telescope:</i> How do telescopes work? Take an inside look and learn about 400-year-old technology still in use today! Then view the universe through a variety of telescopes.
Aug 20, 7:30	<i>Search for Another Earth:</i> Why does Earth have abundant life, but nowhere else in our Solar System? How many planets like Earth might be out there in our Galaxy? Take home a star map of other stars with planets.
Sep 3, 7:00	<i>A Universe of Exploding Stars:</i> SUPERNOVA! Why do some stars explode? What would a universe without supernovae be like? Take home a star map that shows which stars will explode as supernovae.
Oct 22, 6:00	<i>Explore Our Galaxy:</i> Build a model of our Galaxy! Solar System, Galaxy, Universe: What's the difference? How big is our Galaxy compared to our Solar System? Take home a model of our galaxy.

MDIA PRODUCT ORDER and MEMBERSHIP FORM

Prices include sales tax, shipping and handling. Profits from sales support the educational programs of MDIA.

If you would like to further support MDIA, please consider joining the Association.

MAPS AND HIKING INFORMATION

	Qty.	Amount
Mount Diablo State Park Map	2.25	_____
Mount Diablo State Park Trail Map	7.50	_____
Hike Brochures: Easy, Moderate, and Demanding (set of 3)	2.00	_____

INTERPRETIVE PUBLICATIONS

Mount Diablo, The Extraordinary Life and Landscapes of a California Treasure	50.00	_____
Mount Diablo Guide	12.50	_____
Geology Brochure and Map	2.00	_____
Trees and Shrubs of Mount Diablo	7.50	_____
Common Birds of Mount Diablo	7.50	_____
Mt. Diablo Wildflowers	7.50	_____

NATURE GUIDES - Laminated/Folded

Local Birds of the San Francisco Bay Area	9.75	_____
Local Rocks of North America	9.75	_____
Local Butterflies of the San Francisco Bay Area	9.75	_____
Local Animal Tracks of North America	9.75	_____

PRODUCTS WITH MOUNT DIABLO STATE PARK LOGO

T-shirts: sky blue or pine green; S,M, L, XL (circle color & size)	16.00	_____
Mount Diablo Patch	4.00	_____
Mount Diablo Lapel / Hat Pin	3.50	_____

SUBTOTAL:

10% discount for MDIA and California State Parks Foundation members and Park Staff	_____
Total Amount: (includes tax & shipping)	_____

Thank you for your mail order.

Mount Diablo Interpretive Association Membership Application

Membership Dues are Deductible to the Full Extent by Law

Membership Category (check one)

_____ Student/Senior (55+)	\$15
_____ Individual	\$25
_____ Family	\$40
_____ Contributing	\$100
_____ Lifetime	\$500

Donation in addition to membership fee \$_____.

Name: _____

Address: _____

City/State/Zip: _____

Telephone: _____

Email: _____

Checks only. Make payable to "MDIA".

Clip and mail to:

MDIA

P.O. Box 346

Walnut Creek, CA 94597-0346

JUNIOR RANGERS PROGRAM OFFERED FOR KIDS

by Steve Elliott

Junior Rangers is a children's outdoor education program sponsored by Mount Diablo State Park. It offers sessions on wildlife, geology, plants, California Indians, ecology, and other topics. The program includes a variety of hands-on activities and hikes. Each session is hosted by a park docent and state park ranger.

The program is offered five Saturday afternoons each spring. For 2011, this will be late April through early June. Sessions will be held at various locations in the park from 1 p.m. to 4 p.m.

Children, ages 7 to 12, plus one accompanying adult, are eligible to participate. Advance registration is required.

Registration is limited to 15 children, plus one adult per child. This program is designed so that a parent and child can participate together. While there is no charge for the program, the park's entrance fee is required.

Each child will receive a workbook and other materials. Awards are given at each stage of completion, including a final graduation ceremony.

For more information or to register, contact Steve Elliott at 925-362-8697 or by email at SAE612@msn.com.



Photo by Spencer Fulweiler

**YOU ARE RESPONSIBLE for obeying these and other park rules.
Ask a Park Ranger for further information.**

- **ALL FEATURES OF THE PARK ARE PROTECTED!**
Do not remove or disturb plants, animals or geological features.
- **PARK HOURS:**
Opens at 8 am, and closes at SUNSET.
Visitors should be in their vehicles heading out at sunset to avoid being locked in.
- **ALCOHOLIC BEVERAGES:**
All alcoholic beverages are PROHIBITED IN THE PARK.
- **VEHICLES / BICYCLES:**
SPEED LIMIT is 15-25 MPH on park roads, 15 MPH in campgrounds and picnic areas. All vehicles must stay on pavement and are prohibited on trails and fire roads.
- **BICYCLES ARE ALLOWED:**
Only on paved roads, fire roads and designated trails. Check at Ranger Station for current regulations.
- **SKATEBOARDS, ROLLERBLADES, ROLLERSKATES and GRAVITY-PROPELLED devices are prohibited.**
- **DOGS:**
MUST BE IN TENT or vehicles at night. MUST BE ON LEASH at all times when out of your car. MUST STAY IN DEVELOPED AREAS ONLY — not allowed on trails or fire roads.
- **FIRES:**
RESTRICTIONS IN EFFECT DURING FIRE SEASON — check with Ranger.

MUST BE IN STOVES OR BARBECUES PROVIDED — No ground fires.

- **PUBLIC TELEPHONE:** Located at Junction Ranger Station.
Dial 911 for emergencies.
- **FIREWORKS: PROHIBITED**
- **FIREARMS/AIRGUNS: PROHIBITED**
- **HUNTING: PROHIBITED**

Fire Danger - How Will It Affect You?						
Fire Danger Reading	Wood fire permitted in stoves and BBQ pits in designated picnic and camp sites	Use of Compressed Logs	Use of Charcoal	Use of Self-contained Stove	Cigarette Smoking (including within a vehicle)	Park Closed
LOW	YES	YES	YES	YES	YES	NO
MEDIUM	NO	YES	YES	YES	YES	NO
HIGH	NO	NO	YES	YES	NO	NO
HIGH WITH RED FLAG	NO	NO	NO	YES	NO	NO
VERY HIGH/ EXTREME	NO	NO	NO	NO	NO	YES

Mount Diablo State Park Phone Numbers

Supervising Ranger	925-855-1730
Junction Ranger	925-837-6129
Mitchell Canyon Ranger	925-672-4266
Summit Museum	925-837-6119
Entrance Station	925-837-0904
Maintenance	925-837-6122
Sector Office	925-673-2891
General Information	925-837-2525
Summit Weather Conditions	925-838-9225

Group Picnic Reservations: Call Ranger Carl Nielson, 925-837-6129, EXT 2

Mount Diablo Review © 2011 by MDIA All rights reserved
www.mdia.org
phone 925-927-7222
fax 877-349-5016
Mount Diablo Interpretive Association
P.O. Box 346
Walnut Creek, CA 94597-0346



Nonprofit Org.
**U.S. POSTAGE
PAID**
Walnut Creek, CA
Permit No. 308

Printed by



925-866-1514

www.prestigeprinting.com