

MOUNT DIABLO REVIEW



MOUNT DIABLO INTERPRETIVE ASSOCIATION

Established in 1974

Spring 2008

MDIA, PO Box 346, Walnut Creek, CA 94597-0346 • 925.927.7222 • fax 877.349.5016 • www.mdia.org

Supervising Ranger Report

Dan Stefanisko
Supervising Ranger
Mount Diablo State Park



ROAD AND TRAIL PLAN

What is a Road and Trail Plan? A Road and Trail Plan is a recommended management plan for the roads and trails within Mount Diablo State Park. At this time Mount Diablo State Park is developing a Road and Trail Plan for the park. The staff at Mount Diablo State Park is very excited to be able to be a part of this process. This plan will be used as a long-term guiding document and takes into consideration all of the elements of the park's values, goals and mission.

Key components in the Road and Trail Plan are:

- Maximize visitor uses and experiences.
- Reduce potential safety conflicts.
- Minimize natural and cultural resource impacts.
- Coordinate with local and regional planning efforts.
- Provide access to surrounding public lands.

An essential part of the Road and Trail Plan is creating an opportunity for the public to provide meaningful input. The staff of Mount Diablo State Park will be surveying park users along the trails of the park. In addition, public meetings will be held in the fall of 2008.



Earth Day
at Mitchell
Canyon
4/19/2008

MDIA President's Column

On behalf of the all volunteer membership of the Mount Diablo Interpretive Association (MDIA), welcome to the incredibly beautiful Mount Diablo State Park. It's your Park. You helped to acquire it and to maintain it with your tax dollars--thank you. Please take care of it! MDIA members are the volunteer stewards of the Park to help the State of California with interpretive and educational initiatives. This complimentary publication is one of those initiatives.



Rich McDrew, President

Yes, MDIA does publications for the Park, and we think we are quite good at it. We are pleased to announce a new publication entitled the TREES AND SHRUBS OF MOUNT DIABLO (see "Spotlight" article on p. 6).

Where Is This Location In The Park?

by Rich McDrew

It happened 30 years ago in the Park. In fact, it was on April 23, 1978, at 2:00 PM, that the "Mount Diablo State Historical Landmark" plaque was placed.

The plaque reads:

"Mount Diablo, sacred to Native Americans, who lived and worshiped there for over 5,000 years, became a critical reference point for Spanish explorers in the 18th century, and American trappers and early California settlers in the 19th.



Mitchell Canyon Native Plant Interpretive Garden

by Dave Caniglia

At the park's most northern part, the Mitchell Canyon entrance, there is something going on at the Visitor Center. Behind this portable building, where docents assist visitors learning about recreation and natural resources in the park, a native plant garden is in the making. The project goal is to exhibit the diversity of native plants preserved in Mitchell Creek watershed, their relationships with the native animals, and the importance of preservation of both, here and beyond.



Some park visitors may not venture out on the hiking trails and realize the extent of the different plants beyond the map board. Those who do may not know what they are looking at and its part in the scheme of things. A short walk along the garden pathway will give a hint, share a glimpse of what lies beyond, and hopefully spark an interest to go farther and learn more.

Last year the park staff organized an effort to construct the infrastructure of the garden site. On Earth Day, a border fence was built and a pathway was laid with the labor and funds of volunteers. The path is ADA, or Adult Disabilities Act, compliant.

A volunteer restoration crew has been authorized to collect seed in the canyon to propagate plants, manage a native plant nursery, and generally nurture the garden to sustainability. The park needs some brain gain and dedicated green thumbs to develop the nursery and garden, set up its interpretive features, and sustain the project. The time to completion, quality, and scale of the project will depend on the volunteer participation. If you can teach local ecology to others, the project wants you!

Currently the general plan is to have the 4 major

habitats represented—Grassland, Woodland, Chaparral, and Riparian—on the approximately 1/3 acre plot. This past rain season marks the first year of sowing seeds and planting the nursery stock into the garden. Protective hardware cloth has been used until they gain a foothold. A minimum of cultivating or disturbing the soil is being done to lessen the invasion of weeds. Weeding this spring and summer will be done by hand in a timely manner to control competition, increase diversity and benefit pollinators.

The Mitchell Canyon Visitor Center contains current information about the native plant garden project, as well as reference books and pictures of native plants and animals. If you have creative initiative to share, or questions please, contact garden steward Dave, at 925 287-9733 or cani @ mindspring.com. Next time you enjoy our beautiful park at Mitchell Canyon, check out the native plants garden and nursery.

continued from page 1

In 1851 Colonel Leander Ransome (sic) established the crossing of the Mount Diablo Base and Meridian lines from which most of California and Nevada were surveyed.

California Registered Historical Landmark No. 905.

Plaque placed by the State Department of Parks and Recreation in cooperation with the San Ramon Valley Historical Society, April 23, 1978."

Speakers at the 1978 dedication ceremony included Al Jones, President of the San Ramon Valley Historical Society; Egon Pedersen, Chair of the Mount Diablo Historical Landmark Committee; John Nejedly, State Senator; Steve Kemiji, Commissioner of the State Historical Resources Commission; Ed Earl, Park Superintendent; and George Weldon, Park Supervising Ranger. The rock pedestal was built by Earl Wilder (Park Maintenance Supervisor) and Burt Bogardus (Park Ranger).

Turn to page 6 for the answer.

Deadlines for submission to the Mount Diablo Review (published twice annually):
April 15 — — Summer Issue
August 15 — — Autumn Issue

Trail Adoption Program

by Rich McDrew

People enjoy the trails of Mount Diablo State Park for a variety of reasons. Foremost among these is the access that those trails provide to the beauty of the mountain and to the fantastic views of the surrounding topography. It is not until a trail becomes blocked by a downed tree, overgrown with vegetation, or the tread becomes difficult to negotiate, that one thinks about trail maintenance.



To help with the challenge of winter storms and annual spring growth of vegetation, a few years ago the Park initiated the "Trail Adoption Program" (TAP). Family members, friends, groups, organizations, and businesses, are encouraged to form a team that will agree to maintain a trail or a portion of a trail for one or more years. In most cases, the team can choose their trail. The Park will supply the trail tools needed to accomplish the work. Trail training will also be provided by the Park or an experienced trail crew leader. The adopting group will work at their own pace and schedule work within a recommended time frame.

Each team will appoint a crew leader for every ten members.

The crew leader will act as a liaison between the team and the Park Trails Coordinator. The crew leader must demonstrate the ability to lead a trail crew in a safe and responsible manner, and be familiar with trail maintenance guidelines and operations regarding volunteers. Training for crew leaders will be provided by the Park.

The Park requires that the adopted trail be inspected at least two times a year--once after winter to evaluate storm damage, and once in late spring to monitor vegetation growth. The inspections will be followed up with a written log of findings to the Park's Trails Coordinator. This log will

help with scheduling work, and deciding what tools will be needed.

Some of those who have formally adopted trails are as follows:

Athenian School = Summit Trail (lower portion).

Bicycle Trails Council of the East Bay = Buckeye & Diablo Ranch Trails.

Burt Bogardus & Rich McDrew = Devils Slide Trail.

Dave Caniglia = Vicinity of Mitchell Canyon Parking Lot.

East Bay Trail Dogs = Tassajara Creek Trail.

MDIA = Globe Lily & Black Point Trails.

Pacific Coast Trail Runners = Zippe & North Peak Trails.

For more information on the Park's "Trail Adoption Program", call the Park's Trail Coordinator, Jeff Beach, at 925/837-6122, or email him at <jbeach@parks.ca.gov>. Thank you for considering helping the Park maintain the hiking trails.

Nightly Rates

In- Season	May 15 - September 15	\$20.00
Off- Season	September 16 - May 14	\$15.00
Additional Vehicles		\$6.00
Senior Discount		\$2.00 off Camping Fees

Group Camps

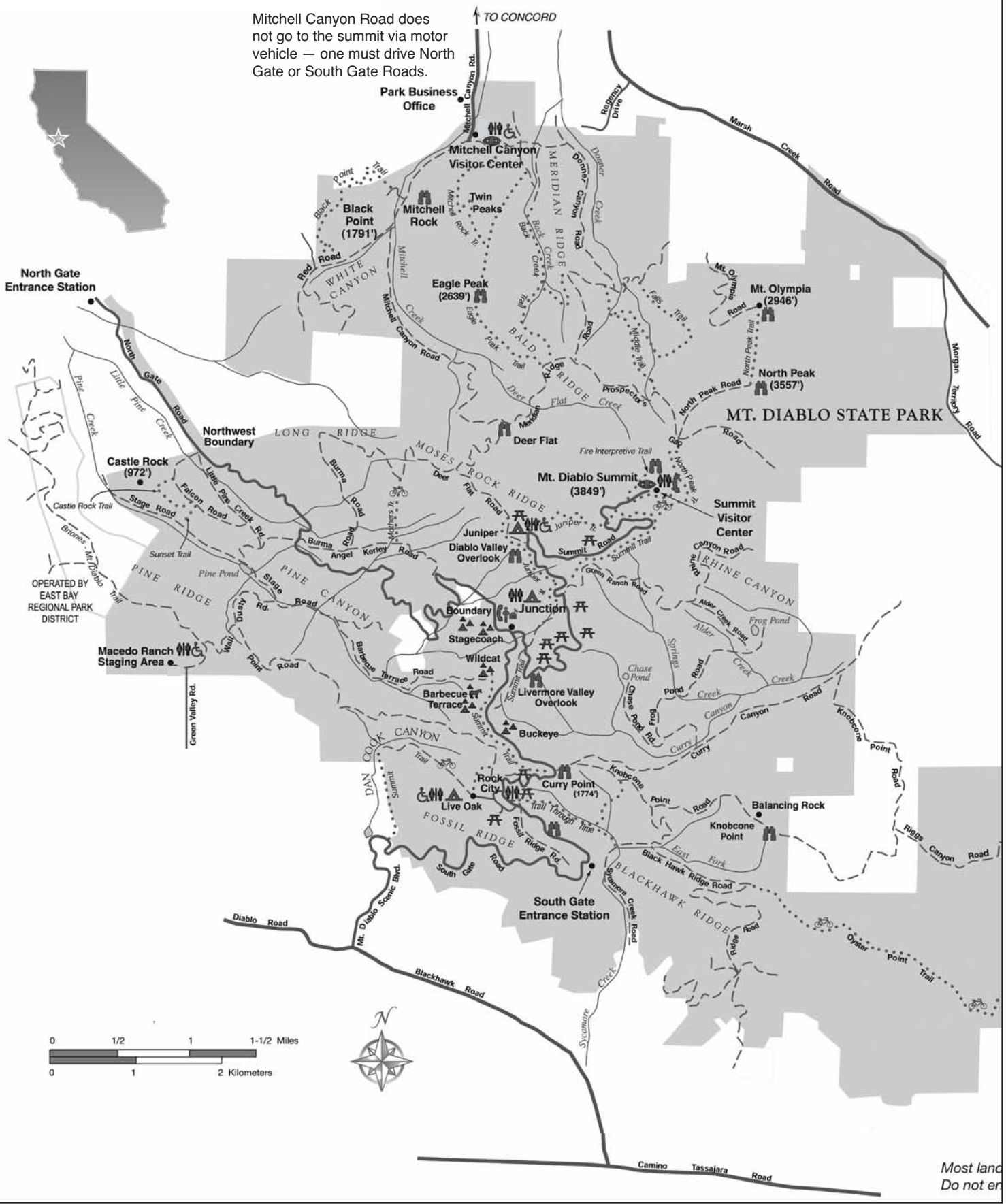
Name	Nightly Use Fee	Capacity	Vehicles
Stagecoach	\$45.00	20	7
Boundary	\$45.00	20	7
Buckeye	\$66.00	30	10
Wildcat	\$66.00	30	10
BBQ Terrace	\$111.00	50	17

Fire Danger - How Will It Affect You?

Fire Danger Reading	Wood fire permitted in stoves and BBQ pits in designated picnic and camp sites	Use of Compressed Logs	Use of Charcoal	Use of Self-contained Stove	Cigarette Smoking (including within a vehicle)	Park Closed
LOW	YES	YES	YES	YES	YES	NO
MEDIUM	NO	YES	YES	YES	YES	NO
HIGH	NO	NO	YES	YES	NO	NO
HIGH WITH RED FLAG	NO	NO	NO	YES	NO	NO
VERY HIGH/EXTREME	NO	NO	NO	NO	NO	YES

Mount Diablo State Park

Mitchell Canyon Road does not go to the summit via motor vehicle — one must drive North Gate or South Gate Roads.



Camping At Mount Diablo State Park

Mount Diablo has three designated family camping areas and five group camps:

Juniper Campground (36 sites, elevation 3000 ft.) Located approximately 2 miles below the summit, on Summit Road, Juniper is known for its fantastic views. Reservations Available.

Live Oak Campground (23 sites, elevation 1450 ft.) Located one mile above the South Gate Entrance Station, off South Gate Road. Live Oak is near Rock City. At Rock City one can explore rock formations. Reservations Available.

Junction Campground (6 sites, elevation 2200 ft.) Located where South Gate and North Gate meet at the Ranger Station. This campground is situated in an open woodland area. Available on a first come/first served basis ONLY.

*All campgrounds are provided with picnic tables, fire pits or stoves, potable water and rest rooms.

*The campgrounds are mainly designed for tent camping, yet they can accommodate RVs up to 20 feet in length. There are no hook ups and no dumping stations provided in the park.

*Pay phones are located at the Junction Ranger Station and the Summit Visitor Center.

Camping Procedures

You may make reservations from 48 hours to 7 months in advance by calling **Reserve America at 1-800-444-7275** or by visiting their website at www.reserveamerica.com. Reservations can be made for a specific campground but not a specific site.

***Check-in time is 2:00 PM. — Check-out time is 12:00 NOON.**

Group Camps—Buckeye, Barbecue Terrace, Wildcat, Stagecoach & Boundary.

Reservations are available for all group camps with Reserve America. Each campground is primitive with running water and pit toilets. Barbecue Terrace is equipped with horse ties for equestrian use. Motorhomes are not allowed in the group camping areas. During the fire season (generally, May—October) the park is subject to closure due to extreme fire danger. Campers must call the park at **(925) 837-2525 or (925) 837-0904** one day prior to their arrival to confirm park status.

General Rules

*Consumption of alcoholic beverage is prohibited in the park.

*8 people and two vehicles maximum per campsite.

*Each juvenile (under the age of 18) must have written permission from his/her parents (with the parents' phone number) prior to camping. Phone verifications will be attempted.

*Quiet hours are from 10:00 PM to 6:00 AM

*No electric generators from 8:00 PM to 10:00 AM.

*Firewood gathering is prohibited.

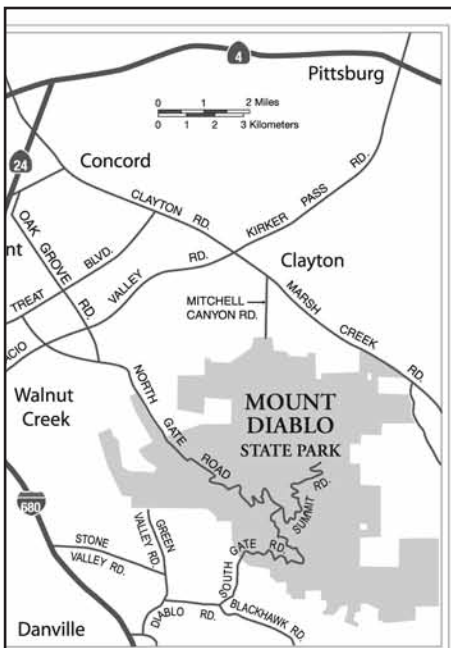
*Fires must be in stoves or fire pits provided (NO GROUND FIRES).

*Campfire restrictions are in effect during the fire season. Check fire conditions for appropriate use (see page 3).

*Campers are locked in the park overnight from sunset to 8:00 AM. For emergencies, dial 911.

ALL FEATURES OF THE PARK ARE PROTECTED.

Do not remove or disturb plants, animals or geological features. You are responsible for obeying all park rules. Ask a Park Ranger for further information.



Legend

- Paved Road
- Fire Roads (Hiking, No Vehicles)
- Hiking Trail
- Accessible Feature
- Bicycle Trail
- Campground
- Exhibits
- Group Campground
- Horse Campground
- Picnic Area
- Ranger Station
- Restrooms
- Telephone
- Viewpoint

OPERATED BY
EAST BAY
REGIONAL PARK
DISTRICT

Park Fees: (per car)

Mitchell Canyon Entrance	\$3
Macedo Park Entrance	\$3
North and South Gates	\$6
minus \$1 for Seniors 62+	

the park is private property.
the owner's permission.

Understanding the Trail Signs

The identification of the hiking trails on Mount Diablo has been much improved of late owing to the signage project spearheaded by the Mount Diablo Interpretive Association. Nearly 400 signs have been added as part of the effort begun in 1993 by MDIA.

The signs on Mount Diablo follow the uniform format prescribed for use in all California State Parks. The format has confused more than one visitor who has hastily read only the larger words on the sign. The name of the trail you are on is specified in relatively small horizontal type near the top of the sign.

The name that appears vertically in larger type (usually another trail but sometimes a park boundary) shows the termination of that particular trail; the word 'TO', in small letters, is important. The mileage to that end point is specified at the bottom.

Here is a simplified sample to the right.

The sign shows that you are on Angel Kerley Road, and that if you go .43 miles to the left you will arrive at the junction with Diablo Ranch Road, and the termination of Angel Kerley Road.



dedication ceremony took place at the Summit. The ceremony unveiled the bronze plaque that is on a rock-mortared pedestal situated on the left at the bottom of the cement stairs leading to the Summit Museum.

Spotlight On

TREES AND SHRUBS OF MOUNT DIABLO

reviewed by Harvey S. Brosler

The purpose of this guidebook is to provide the beginning naturalist, amateur botanist, and nature lover with a tool to identify ninety percent of the woody plants, subdivided into trees and shrubs, encountered on the mountain. Authored by Dr. Glenn Keator, a noted Berkeley botanist and California native plant expert, the guide is comprised of an introduction which provides a definition distinguishing trees from shrubs, describes different common plant communities of shrubs and trees, some locations on the mountain where they are located, and some explanatory information on how they are named and categorized.

The main body of the guidebook is divided into a section on trees followed by a section on shrubs. Accompanying each photograph is the most widely used common name as well as the scientific names of the family, genus, and species, a description of the tree or shrub, and the location where it can be found in the Park. Following the section on trees and shrubs, the guidebook recommends sites and hikes to view certain trees and shrubs, a glossary of terms, and an index by common name and scientific name.

This easy to use guidebook is made of heavy glossy paper stock that can withstand rough treatment and can easily be placed in a backpack. The Guide can be purchased at the Mitchell Canyon Visitor Center or the Summit Visitor Center for \$5.00 or by mail from MDIA for \$7.25. MDIA members receive a 10 percent discount.



Trees and Shrubs of Mount Diablo

GLENN KEATOR

Save Mount Diablo generously publishes the "Events Schedule" which includes hikes in Mount Diablo State Park. This schedule may be found on-line at www.save-mountdiablo.com or via a link at www.mdia.org.

MDIA PRODUCT ORDER and MEMBERSHIP FORM

(Profits from sales support the educational programs of MDIA)

Thank you for your mail order.

If you would like to further support MDIA you might consider joining the Association.

MAPS AND HIKING INFORMATION

	Qty.	Amount
Mount Diablo State Park Map	2.25	_____
Mount. Diablo State Park Trail Map	6.50	_____
Hike Brochures: Easy, Moderate, and Demanding-(set of 3)	2.00	_____

Mount Diablo Interpretive Association Membership Application

Membership Dues are Deductible to the Full Extent by Law

INTERPERTIVE PUBLICATIONS

Mount Diablo Guide	12.50	_____
Geology Brochure and Map	2.00	_____
Trees & Shrubs of Mount Diablo	7.50	_____
Common Birds of Mount Diablo	7.50	_____
Mount Diablo Wildflowers	7.50	_____
MDSP Coloring Book	3.75	_____
51 Uncommon Names of MDSP	2.25	_____
Mount Diablo State Park Coloring Book	3.75	_____

NATURE GUIDES - Laminated/Folded

Local Birds of the San Francisco Bay Area	9.75	_____
Local Rocks of North America	9.75	_____
Local Butterflies of the San Francisco Bay Area	9.75	_____
Local Animal Tracks of North America	9.75	_____

PRODUCTS WITH MT. DIABLO STATE PARK LOGO

T-shirts: lt. blue or lt. olive; S,M, L, XL (circle size & color)	16.00	_____
Mount Diablo Patch	4.00	_____

TOTAL AMOUNT (prices include tax & shipping)* _____

* 10% discount for MDIA members and Park Staff.

Membership Category (check one) **Make Checks Payable to "MDIA"**

_____ Student/Senior	\$15
_____ Individual	\$25
_____ Family	\$40
_____ Sustaining	\$50
_____ Contributing	\$100
_____ Lifetime	\$500

Donation in addition to membership fee \$ _____.

Name _____ E-mail _____

Address _____ Tele- _____

phone _____

City/State/Zip _____

Clip and Mail to:

MDIA
P.O. Box 346
Walnut Creek, Ca 94597-0346



The Bicentennial Tree

by Rich McDrew

About one-quarter mile up [or south] on the Mitchell Canyon [Fire] Road from the parking lot, there exists on the right side of the [Fire] Road, an interpretive signpost with the words "Bicentennial Tree". Many Park visitors have asked what the bicentennial tree commemorates. The answer that is usually given is that it commemorates the birth year of our nation's founding in 1776. Sorry, wrong answer!

The correct answer is that it commemorates the birth year of the Constitution of the United States crafted in Philadelphia in the summer of 1787. In 1987, the Acalanes Chapter of the Daughters of the American Revolution (DAR)—approached Park management with the proposal to observe the 200th anniversary of the events of 1787 by dedicating a tree. The aforementioned tree (Coast Live Oak) was selected because approximately 200 years before 1987 this tree was just an acorn about to give birth to a magnificent living organism, just as the Constitution gave life to a struggling neophyte nation. On September 19, 1987, at 10:00 AM, a large group of notables from DAR, MDIA, and the Park, assembled for the tree dedication ceremony. Elizabeth "Betty" Zilen, DAR Acalanes Chapter, organized the ceremony. The Park was represented by Rangers Tom Bernardo and Bob Justice. The 1987 ceremony reminded those gathered—and the current signpost intends to inspire Park visitors today—that it was in the summer of 1787 when 55 delegates from 12 of the 13 states (Rhode Island chose not to participate) hotly debated for four months to create the Constitution of the United States. George Washington presided, James Madison kept the notes, Benjamin Franklin offered wisdom and humor at critical times. "The nation's greatest leaders had gathered to wrestle its fundamental problems to the ground, and in the process to create a model of self-government for all humanity." [from THE SUMMER OF 1787 by David O. Stewart, 2007]

**YOU ARE RESPONSIBLE for obeying these and other park rules.
Ask a Park Ranger for further information.**

• ALL FEATURES OF THE PARK ARE PROTECTED!

Do not remove or disturb plants, animals or geological features

• PARK HOURS: Opens 8:00am—closes at SUNSET.

Visitors should be in their vehicles heading out at sunset to avoid being locked in

• ALCOHOLIC BEVERAGES: All alcoholic beverages are PROHIBITED IN THE PARK. State laws regarding alcoholic beverages are STRICTLY ENFORCED

• VEHICLES/BICYCLES: SPEED LIMIT is 15-25 MPH on park roads, 15 MPH in campgrounds and picnic areas. OFF ROAD USE PROHIBITED. All vehicles must stay on pavement and are prohibited on trails and fire roads

• BICYCLES ARE ALLOWED only on paved roads, fire roads and designated trails. Check at Ranger Station for current regulations

• SKATEBOARDS, ROLLERBLADES, ROLLERSKATES and gravity-propelled devices are prohibited

• DOGS — MUST STAY IN DEVELOPED AREAS ONLY — not allowed on trails or fire roads. MUST BE IN TENT or vehicles at night. MUST BE ON LEASH at all times when out of your car.

• CAMPING — MAXIMUM OF 8 PERSONS AND TWO VEHICLES PER CAMPSITE IS

PERMITTED ONLY IN THE JUNIPER, JUNCTION AND LIVE OAK CAMPGROUNDS. JUVENILES (under 18) MUST HAVE WRITTEN PERMISSION from parents

QUIET HOURS 10pm to 6am

NO ELECTRIC GENERATORS 8pm to 8am

• FIRES — RESTRICTIONS IN EFFECT DURING FIRE SEASON—check with Ranger MUST BE IN STOVES OR BARBEQUES PROVIDED - no ground fires
FIREWOOD GATHERING PROHIBITED

• PEACE AND QUIET: NOISE must not carry beyond your immediate camp or picnic ground

• TELEPHONES: Located at Junction Ranger Station and Summit. Dial 911 for emergencies

• FIREWORKS: PROHIBITED

• FIREARMS/AIRGUNS: PROHIBITED

• NO HUNTING

**Summit
Museum is
open 7 days a
week
10:00 am
to 4:00 pm**

State Park Phone Numbers:

Supervising Ranger	855-1730
Junction Ranger	837-6129
Mitchell Canyon Ranger	672-4266
Summit Visitor Center	837-6119
Entrance Station	837-0904
Maintenance	837-6122
Sector Office	673-2891
General Information	837-2525

www.parks.ca.gov

Mount Diablo Review © 2008 by MDIA All rights reserved
www.mdia.org
phone 925 927 7222
fax 877 349 5016

Mount Diablo Interpretive Association
P.O. Box 346
Walnut Creek, CA 94597-0346



**Mount Diablo
Summit**
temp. & wind
conditions, updated
every 20 minutes
925-838-9225

Nonprofit Org.
**U.S. POSTAGE
PAID**
Walnut Creek, CA
Permit No. 308